

CellView Lite Software

For CellMite® Product Line

The Electro Standards Laboratories CellMite® Intelligent Digital Signal Conditioners connect directly to standard strain gages, such as a load cells, extensometers, and pressure sensors. CellMites® simultaneously generate serial outputs for connection to a PC's as well as +/-10V analog outputs. Our extremely accurate conditioners are available in board versions or as encased units.

The CellView Lite Windows-based Software provides an easy graphical user interface (GUI) to CellMite® modules.

CellView Lite Software Features:

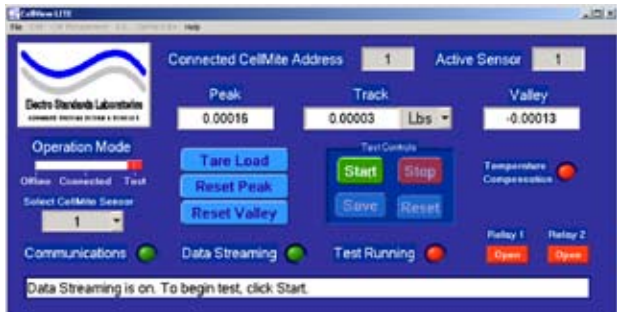
- Easy guides through adding/removing CellMite® units.
- Stores calibration data for three sensors.
- Guides user through sensor calibration.
- Ability to individually name CellMite® units.
- Tare and reset peak and valley for the sensor.
- Set output data with a quadratic filter.
- Save/load the CellMite® unit and sensor setup information.
- Setup a test to start and stop automatically.
- LEDs indicate operational status of the CellView Lite interface.
- Save date, calibration, and sensor test information to spread sheets.
- Control output with two relay switches and analog output of voltage.
- Units of Lb, Kg, In, Cm, %, and User-Defined.





CellView Lite Intuitive Software!

The Main Panel in Connected Mode



Test Controls - Tests may be automatically started and stopped.



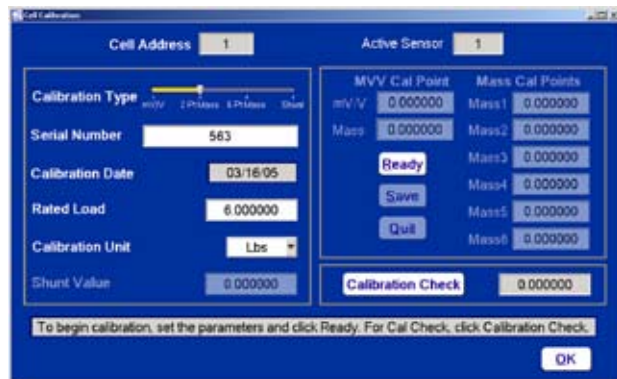
Cell Setup - Setups may be saved and loaded for viewing.



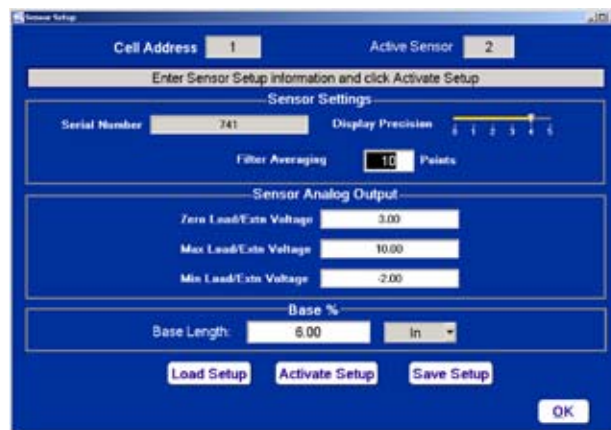
Simply Add or Remove Cells



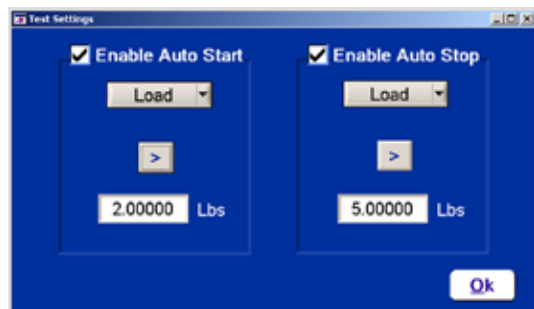
The Calibration Panel - Messages guide user through calibration process.



Sensor Setup Panel - The user is walked through the process with messages.



Auto Test Settings - Automatically start and/or stop tests.



System Requirements

	Minimum	Recommended
Processors	Pentium IV 400 Mhz	Pentium IV 400 Mhz
Memory	256 M bytes	512 M bytes
Disk Space	50 MB	50 MB
Video	Local Bus	Accelerated Bus
Screen Resolution	1024 x 768	1024 x 768 Large Fonts
Windows Version	Windows 2000	Windows XP
Drive	CD-ROM	CD-ROM
Printer	Windows Compatible	Epson Stylus