

## PathWay® Model 7748 Single Channel RS530 DB25 A/B Switch with Cutoff Position, Telnet and GUI

- **Absolutely NO data passes through the switch when in the OFFLINE position.**
- **The ultimate FIREWALL!**

### INTRODUCTION

The PathWay® Model 7748 Single Channel DB25 A/B Switch with Cutoff Position, Telnet and GUI allows the user the capability of sharing a single port interface device connected to the "COMMON" port among two other devices connected to the "A" and "B" ports with remote access functionality. Remote Control access can be accomplished using an Ethernet 10/100BASE-T connection and either Telnet commands or Graphical User Interface. The Model 7748 is enclosed in a 1U, full rack size, all metal black chassis designed to provide EMI/RFI shielding and fit in a standard 19" rack.

### FEATURES:

- The switch ports are transparent to all data.
- All (25) pins of the DB25 interface are switched via break-before-make electromechanical relays.
- On power loss, unit reverts to a cutoff position that isolates all communication ports.
- When power is restored, the unit automatically switches to the default position set by the user.
- Front panel pushbutton control.
- Control of the switch position from a 10/100-Base-T LAN Ethernet environment.
- Remote Control Telnet command interface or Graphical User Interface that allow the user to control switch position, lockout front panel operations and obtain switch status.
- Front panel LED's display present position and power status.

#### Ask about our popular

#### Model 900 EIA/TIA RS-530 Interface Analyzer

Tri-State LED's display  
Red, Green & Off to Indicate  
Signal Status Easy to use,  
for fault isolation.



### SPECIFICATIONS:

#### PORT CONNECTORS:

- (2) DB25 male connectors labeled A and B.
- (1) DB25 female connector labeled COM.

**FRONT PANEL CONTROL:** (1) manual pushbutton allows local switching.

**DISPLAY:** (2) Front panel LED's display switch position and power status.

**REMOTE CONTROL:** (1) RJ45 female connector on rear panel accepts 10/100-Base-T LAN Access Ethernet interface port for Remote Control Operation.

**POWER:** UL approved 100VAC/240VAC, 50Hz/60Hz wall mount power module supplies 12 VDC, 500 mA to the unit. Has 2-prong, US, non-polarized plug.

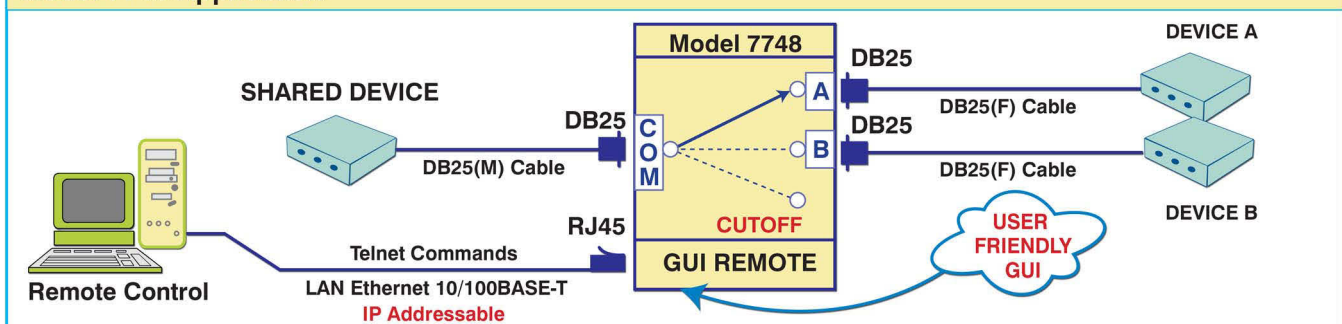
**DIMENSIONS:** Rackmount:  
19.0" W x 1.75" H x 8.24" D. [48.3 x 4.5 x 21.0 cm]

**WEIGHT:** Approximately 4.5 lbs [2.1 kg]

#### WIDE RANGE POWER OPTION AVAILABLE:

(Cat No 517277) **CE, RoHS, and UL** listed table mount power module, 100VAC/240VAC, 50Hz/60Hz for use in place of standard power module that is included with the unit. Has IEC 60320 C14 inlet. **Ideal for international applications.**

### Model 7748 Application



## UTILIZING THE USER-FRIENDLY REMOTE GRAPHICAL USER INTERFACE SOFTWARE

To connect to the switch from a workstation or computer having access to the LAN that the PathWay® Model 7748 LAN port is connected to, simply launch a standard web browser and type in the appropriate IP address. The Java Applet will be automatically uploaded from the switch upon connection. The environment requirement for the GUI is Java 1.7 and above.

### 10/100BASE-T LAN SETUP

#### Network Setup

The switch is configured from the factory to use DHCP to automatically get its IP address from a DHCP server on the local area network when connected to the network and powered up. Therefore, a DHCP server is needed on the local area network for the initial configuration. After that, the switch can be configured to use a static IP address. To find the IP address of a switch that it has gotten from the DHCP server, or to reconfigure the IP Address of the switch, use the Lantronix® DeviceInstaller application.

#### Getting DeviceInstaller

DeviceInstaller requires Microsoft's .NET Framework version 4.0 or higher. If the .NET Framework is not already installed, it must first be installed. The .NET Framework can be downloaded from Microsoft's website, either as a web install, or as a standalone installation. The latest version of DeviceInstaller can be downloaded from Lantronix's website.

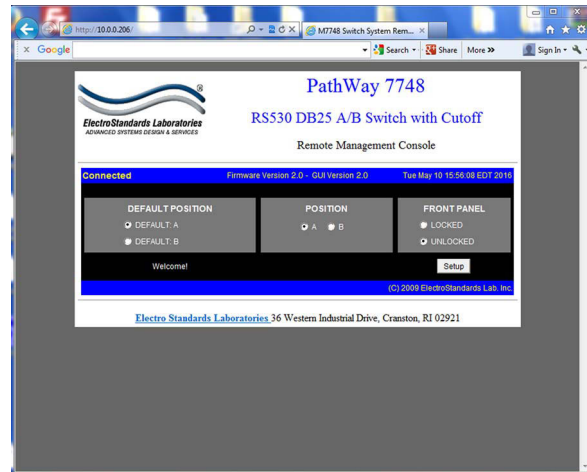


Figure 1: GUI in a Standard Web Browser

### SOFTWARE FEATURES:

- Access User Interface via standard web browser.
- **Easy to use, simple point and click operation.**
- Remotely access to control or monitor the Pathway® Model 7748.
- Users can change the switch's IP address.
- LAN access gives users across the LAN or over the Internet access to control if user network is configured accordingly.

### CHANGING POSITION AND LOCK STATUS

To change the switch position, click on the radio button "A" or "B" as desired. Locking and unlocking the front panel pushbutton can be done by clicking on the "Locked" or "Unlocked" radio buttons. See Figure 2.

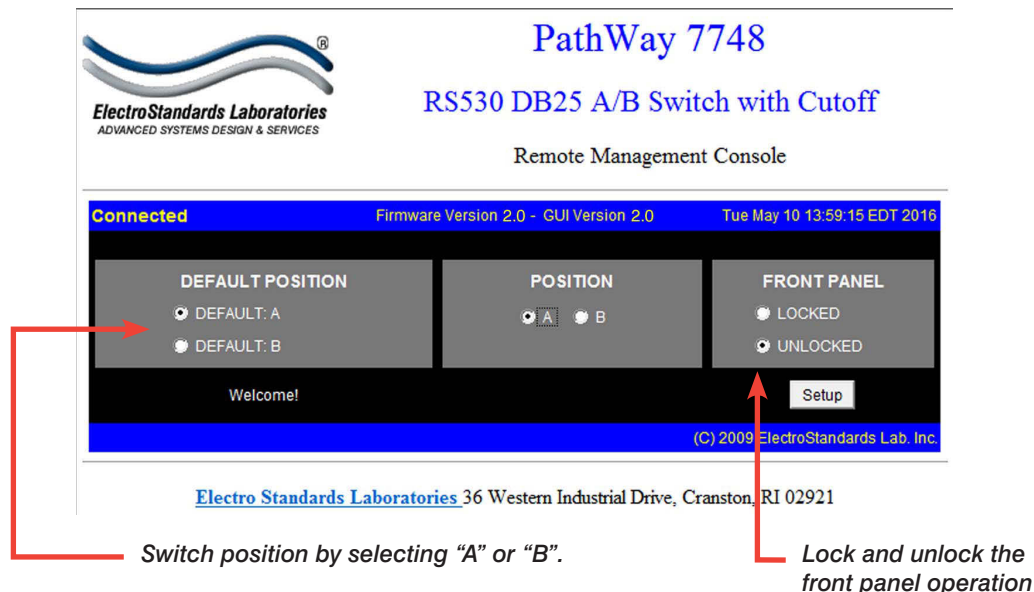


Figure 2: Change the position and lockout from the GUI