



**Electro Standards Laboratories**  
ADVANCED SYSTEMS DESIGN & SERVICES

**SPECIFICATIONS**  
**MODEL 7438**  
(Cat. No. 307438)

# PathWay® Model 7438 4-Channel DB25/DB15/DB9 A/B Switch with Telnet and GUI

## INTRODUCTION

The PathWay® Model 7438 4-Channel DB25/DB15/DB9 Switch with Telnet and GUI allows the user the capability of sharing a single port interface device, connected to the "COMMON" port, among two other devices, connected to the "A" and "B" ports, for each channel. Remote Control access can be accomplished using an Ethernet 10/100BASE-T connection and either Telnet Commands or Graphical User Interface. The Model 7438 is enclosed in a 3U, full rack size, all metal black chassis designed to provide EMI/RFI shielding and fit in a standard 19" rack.

## FEATURES:

- Each channel consists of of three A/B/COMMON port sets: (1) DB25, (1) DB15, and (1) DB9.
- The switch ports are transparent to all data.
- All pins of the DB25, DB15, and DB9 interfaces are switched via break-before-make electromechanical relays.
- Independent control of each channel with front panel pushbutton control.
- Control of the switch position from a 10/100Base-T LAN Ethernet environment.
- Remote Telnet Command Interface or Graphical User Interface that allows the user to control switch position, lockout front panel operations, and obtain switch status.
- Remote control of the switch is password protected, where the password protection can be disabled.
- Front panel LED's display present position and power status.



## SPECIFICATIONS:

**PORT CONNECTORS:** Channels 1 thru 4 each consist of (1) DB25 (F), (1) DB15 (F), and (1) DB9 (F). These "A", "B", and "COMMON" switch ports are custom labeled as listed in Table 1.

**FRONT PANEL CONTROL:** (4) Manual pushbuttons allow local switching.

**REMOTE CONTROL PORT:** (1) RJ45 female connector on rear panel accepts Ethernet 10/100Base-T connection and either TELNET commands or Graphical User Interface for remote operation.

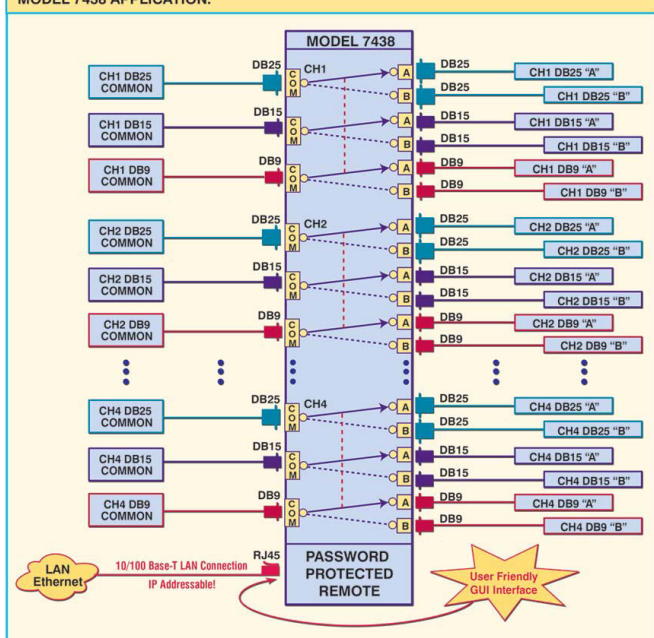
**DISPLAY:** (8) Front panel Red LED's display switch position and power status.

**POWER:** UL approved 100VAC/240VAC, 50Hz/60Hz wall mount power module supplies 12 VDC, 500mA to the unit. Has 2-prong, US, non-polarized plug.

**DIMENSIONS:** Rackmount, 19.0" W x 5.25" H x 12.14" D. (48.3 x 13.4 x 30.9 cm)

**WEIGHT:** Approximately 11.0 lbs. (5.0 kg).

### MODEL 7438 APPLICATION:



**Table 1 Switch and Connector Labels**

CH	A - Position	B - Position	COMMON
1	ANDVT - 1	KY99 - 1	ADI - J3
2	ANDVT - 2	KY99 - 2	ADI - J3
3	ANDVT - 3	KY99 - 3	ADI - J3
4	ANDVT - 4	KY99 - 4	ADI - J3

## WIDE RANGE POWER OPTION AVAILABLE:

(Cat No 517277) **CE, RoHS, and UL** listed table mount power module, 100VAC/240VAC, 50Hz/60Hz for use in place of standard power module that is included with the unit. Has IEC 60320 C14 inlet. **Ideal for international applications.**

## UTILIZING THE USER-FRIENDLY REMOTE GRAPHICAL USER INTERFACE SOFTWARE

To connect to the switch from a workstation or computer having access to the LAN that the Model 7438 LAN port is connected to, simply launch a standard web browser and type in the appropriate IP address. The Java Applet will be automatically uploaded from the switch upon connection. The environment requirement for the GUI is Java 1.7 and above.

## 10/100BASE-T LAN SETUP

### Network Setup

The switch is configured from the factory to use DHCP to automatically get its IP address from a DHCP server on the local area network when connected to the network and powered up. Therefore, a DHCP server is needed on the local area network for the initial configuration. After that, the switch can be configured to use a static IP address. To find the IP address of a switch that it has gotten from the DHCP server, or to reconfigure the IP Address of the switch, use the Lantronix® DeviceInstaller application.

### Getting DeviceInstaller

DeviceInstaller requires Microsoft's .NET Framework version 4.0 or higher. If the .NET Framework is not already installed, it must first be installed. The .NET Framework can be downloaded from Microsoft's website, either as a web install, or as a standalone installation. The latest version of DeviceInstaller can be downloaded from Lantronix's website.

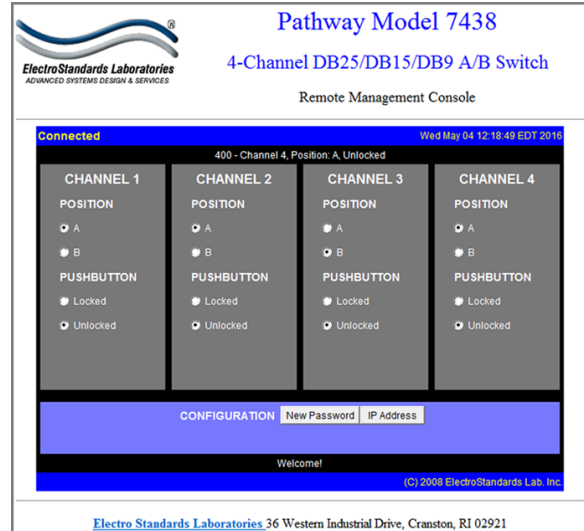


Figure 1: GUI in a Standard Web Browser

## SOFTWARE FEATURES:

- Access User Interface via standard web browser.
- **Easy to use, simple point and click operation.**
- Remotely access to control or monitor the Model 7438.
- Remote control of the switch is password protected.
- Users can change the switch's IP address.
- LAN access gives users across the LAN or over the Internet access to control if user network is configured accordingly.

## LOGGING into the GUI

Once logged in, the user can perform one of several actions:

- Change the switch position.
- Lockout control of the switch's front panel
- Change the login password
- Re-configure the switch's IP address

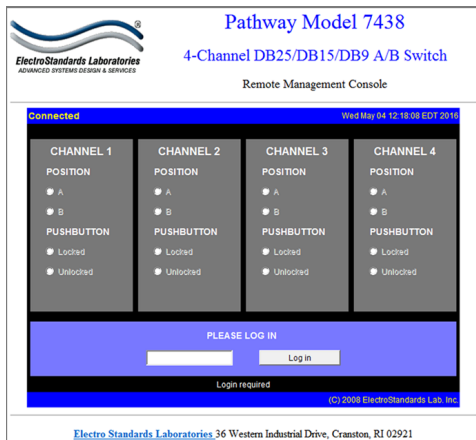


Figure 2: Logging into the GUI

## CHANGING POSITION AND LOCK STATUS

To change the switch position of a channel, click on the radio button "A", or "B", as desired for each channel. Locking and unlocking the front panel pushbuttons can be done by clicking on the "Locked" or "Unlocked" radio buttons for each channel. See Figure 3.



Switch position by selecting "A" or "B" for CH1, CH2, CH3, or CH4.

Lock and unlock the front panel operation for CH1, CH2, CH3, or CH4.

Figure 3: Change the position and lockout from the GUI