

PathWay® Model 7355 Dual Cat5e RJ45 A/B/OFFLINE Switch with 10/100 BASE-T Remote Access and GUI

IP Addressable! Communicate with Switch via Internet Explorer running a PC.

INTRODUCTION

The PathWay® Model 7355 DUAL CAT5E RJ45 A/B/OFFLINE Switch with 10/100 Base-T LAN Telnet Access and GUI, allows the user the capability of sharing a single port interface device connected to the "COMMON" port among two other devices connected to the "A" and "B" ports for each channel. Remote access can be accomplished using an Ethernet 10/100 Base-T connection and either Telnet commands or Graphical User Interface. The Model 7355 is enclosed in a 1U, full rack size, all metal black chassis designed to provide EMI/RFI shielding and fit in a standard 19" rack.

Proper authentication is required for remote access via the 10/100 Base-T connection. User can monitor status and control switch functions.

FEATURES:

- Each channel allows access to two Cat5e RJ45 networks from one COMMON network or device.
- **Secure Off-Line switch position.**
- The switch ports are transparent to all data.
- All pins of the RJ45 interface are switched via break-before-make electromechanical relays.
- All switched signals are passed via latching copper contact relays that maintain their position and continuity even in the event of a power loss.
- Individual channel control.
- **Front panel pushbutton control.**
- Remote Control of the switch position from a 10/100 Base-T LAN Ethernet environment.
- Remote Telnet command interface or Graphical User Interface that allow the user to control switch position, lockout front panel access, and obtain switch status.
- Front panel LEDs display switch position for each channel as well as power status.
- **Certified Cat5e compliance.**
- **For a unit with Remote Control only, See Model 7352, Cat No 307352.**
- Custom length Cat5e cables available for your switch installation.



SPECIFICATIONS:

PORT CONNECTORS: (3) RJ45 female connectors labeled A, B, and COMMON for each of the two channels.

FRONT PANEL CONTROLS: (2) Manual pushbuttons allow local switching.

DISPLAY: (4) Front panel LED's display switch position of each channel and power status.

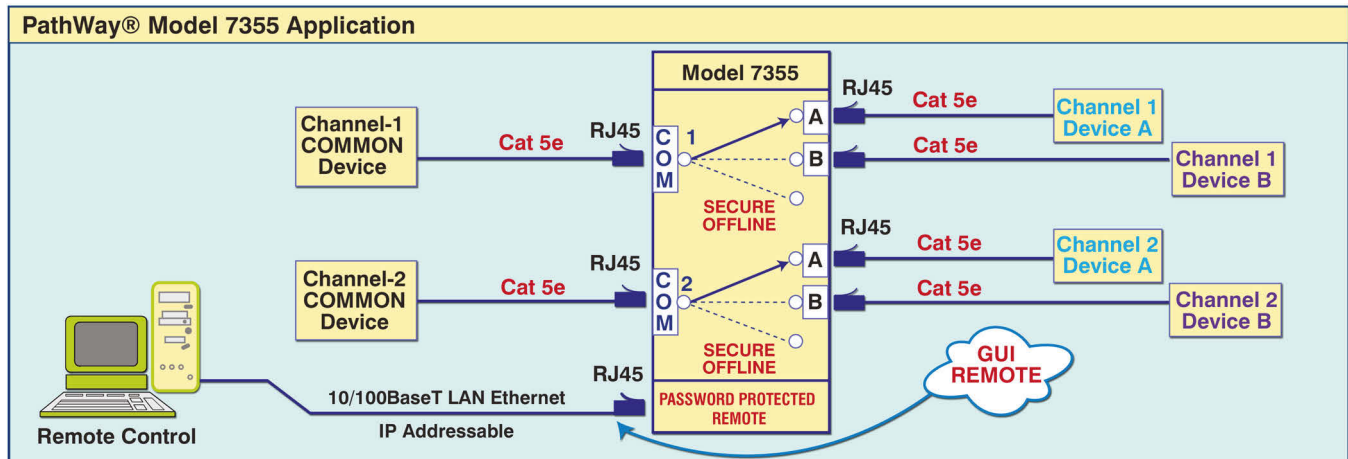
REMOTE: (1) RJ45 female connector on rear panel accepts Ethernet 10/100 Base-T connection and either TELNET commands or Graphical User Interface for remote operation.

POWER: UL approved wall mount 100VAC/240VAC, 50Hz/60Hz power module supplies 12 VDC, 500 mA to the unit. Has 2-prong, US, non-polarized plug.

DIMENSIONS: Rackmount configuration 19" W x 1.75" H x 8" D. (48.3 x 4.4 x 20.3 cm)

WEIGHT: Approximately 4.5 lbs (2.0 Kg)

WIDE RANGE POWER OPTION AVAILABLE: (Cat No 517277) **CE, RoHS, and UL** listed table mount power module, 100VAC/240VAC, 50Hz/60Hz for use in place of standard power module that is included with the unit. Has IEC 60320 C14 inlet. **Ideal for international applications.**



UTILIZING THE USER-FRIENDLY REMOTE GRAPHICAL USER INTERFACE SOFTWARE

To connect to the switch from a workstation or computer having access to the LAN that the Model 7355 LAN port is connected to, simply launch a standard web browser and type in the appropriate IP address. The Java Applet will be automatically uploaded from the switch upon connection. The environment requirement for the GUI is Java 1.6 and above.

10/100BASE-T LAN SETUP Network Setup

The switch is configured from the factory to use DHCP to automatically get its IP address from a DHCP server on the local area network when connected to the network and powered up. Therefore, a DHCP server is needed on the local area network for the initial configuration. After that, the switch can be configured to use a static IP address. To find the IP address of a switch that it has gotten from the DHCP server, or to reconfigure the IP Address of the switch, use the Lantronix® DeviceInstaller application.

Getting DeviceInstaller

DeviceInstaller requires Microsoft's .NET Framework version 4.0 or higher. If the .NET Framework is not already installed, it must first be installed. The .NET Framework can be downloaded from Microsoft's website, either as a web install, or as a standalone installation. The latest version of DeviceInstaller can be downloaded from Lantronix's website.

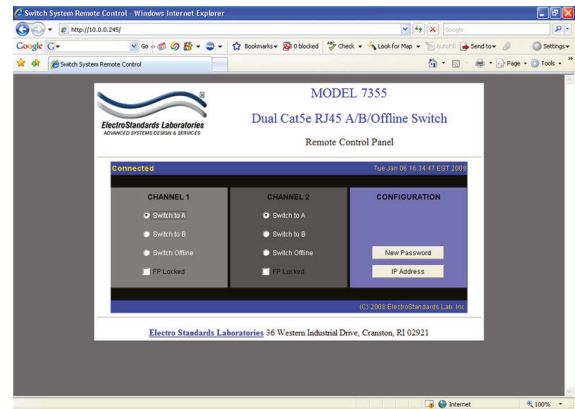


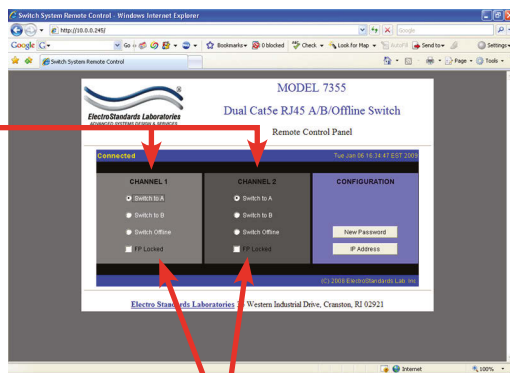
Figure 1: GUI in a Standard Web Browser

SOFTWARE FEATURES:

- Access User Interface via standard web browser.
- Login password authentication required.
- **Easy to use, simple point and click operation.**
- Remotely access to control or monitor the Model 7355 Dual RJ45 A/B/OFFLINE Switch System.
- Users can change the login password and/or the switch's IP address.
- LAN access gives users across the LAN or over the Internet access to control if user network is configured accordingly.

CHANGING POSITION AND LOCK STATUS

To change the switch position, click on the radio button for "A", "B", or "Offline" as desired. Locking and unlocking the front panel pushbutton can be done by clicking on the "Locked" checkbox. See Figure 2.



Switch position by selecting "A" or "B" or "OFFLINE". Lock and unlock the front panel operation

Figure 2: Change the position and lockout from the GUI

QUERYING THE STATUS OF THE UNIT

Once connected, the GUI will stay up-to-date on the current position and status of the unit. Any changes that are made outside of the GUI, such as by pushbutton, will be reflected in the GUI. These changes will cause the radio buttons of the GUI to automatically change to show the new status. See Figure 3.

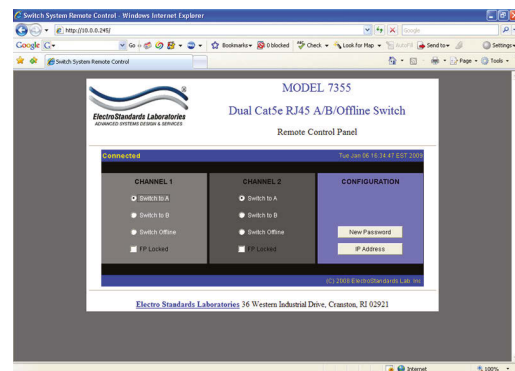


Figure 3: The GUI is alerted to changes in the unit status.