

PathWay® Model 7202 50 Ohm Impedance BNC A/B Switch with RS232 Serial Remote Port

- Ideal for sharing laboratory test equipment having a BNC coaxial cable interface.
- Field proven use in university and high technology research laboratories.

INTRODUCTION

The PathWay® Model 7202 BNC 50 Ohm A/B Switch with Remote Control allows the user the capability of accessing two separate devices, ports A and B, via connection through a device connected to the Common port of the switch. The Model 7202 is packaged in a slim desktop style enclosure.

The switch may be controlled manually via the front panel pushbutton or remotely from an RS232 Serial port located on the rear of the unit.

Switch position state may be attained via the LED display on the front of the unit.

FEATURES:

- The switch ports are transparent to all data.
- Both the Center and Shell of the BNC interface are switched via break-before-make electromechanical relays.
- The unit maintains last set position on power loss and continues to pass data.
- Front panel pushbutton control.
- Remote RS232 ASCII Commands that allow the user to control switch position, obtain switch status, as well as, query firmware version number, query serial number, and enable/disable autosend of switch positions.
- Remote RS232 Port pinout configured as a DTE device.
- Front panel LED's display present position and power status.
- All BNC ports are impedance matched to support 50 Ohm equipment.
- **Optional GUI Software can be used to control the switch and obtain status (Catalog# 527910)**
- Custom length 50 Ohm BNC coaxial cables available for your switch installation. Call for quote.
- **For 75 Ohm BNC switch, see Model 7302, Cat No 307302.**
- **For 93 Ohm BNC switch, see Model 7402, Cat No 307402.**
- ★ **Municipalities, schools, government:**
This product is on GSA Schedule!

PathWay® Model 7202



SPECIFICATIONS:

PORT CONNECTORS: (3) BNC (F) connectors labeled A, B and COMMON.

FRONT PANEL CONTROL: (1) Manual pushbutton allows local switching.

DISPLAY: (2) Front panel LED's display switch position and power status.

REMOTE CONTROL: (1) DB9(F) REMOTE connector on rear panel accepts ASCII RS232 Serial Data. GUI Software Interface available as option.

POWER: UL approved 100VAC/240VAC, 50Hz/60Hz wall mount power module supplies 12 VDC, 500mA to the unit. Has 2-prong, US, non-polarized plug.

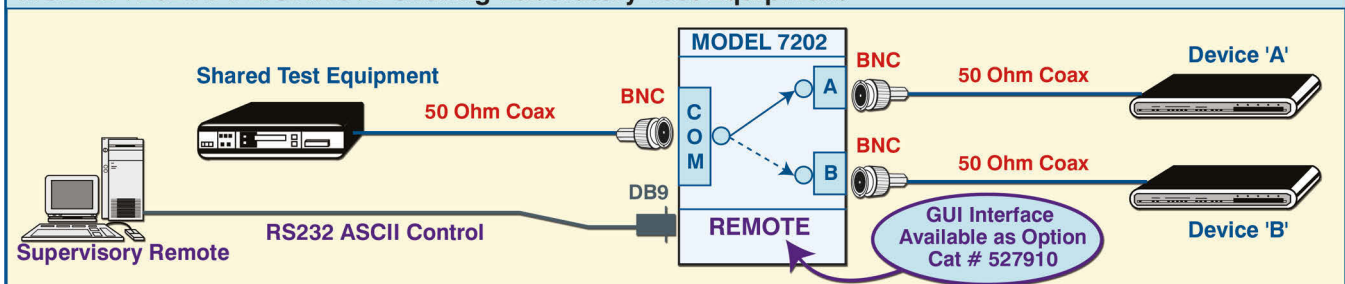
DIMENSIONS: Desktop 5.44" W x 7.27" D x 2.26" H. (13.9 x 18.5 x 5.8 cm)

WEIGHT: Approximately 1.2 lbs. (0.6 kg)

WIDE RANGE POWER OPTION AVAILABLE:

(Cat No 517277) **CE, RoHS, and UL** listed table mount power module, 100VAC/240VAC, 50Hz/60Hz for use in place of standard power module that is included with the unit. Has IEC 60320 C14 inlet. **Ideal for international applications.**

MODEL 7202 APPLICATION: Sharing Laboratory Test Equipment



Catalog No. 527910 GUI Software for use with the Model 7202 50 Ohm Impedance BNC A/B Switch with RS232 Serial Remote Port

- Also applicable to Model 7302 (75 Ohm) and 7402 (93 Ohm) BNC A/B Switches

INTRODUCTION

The GUI Software for the PathWay® Model 7202 BNC 50 Ohm A/B Switch with RS232 Remote provides the user a Graphical User Interface that allows control and monitoring of the Model 7202 through its Remote port on a Desktop or laptop via point-and-click operation.

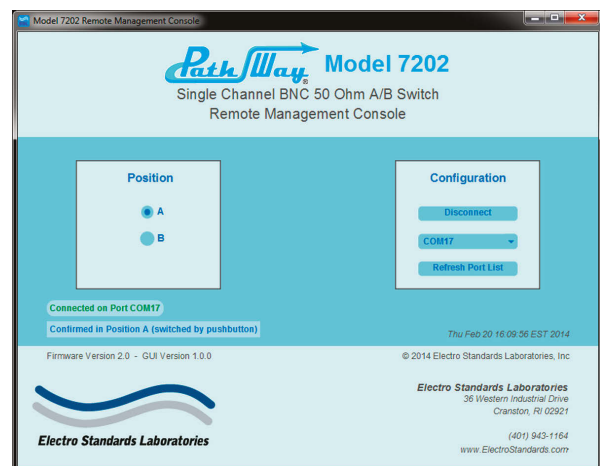
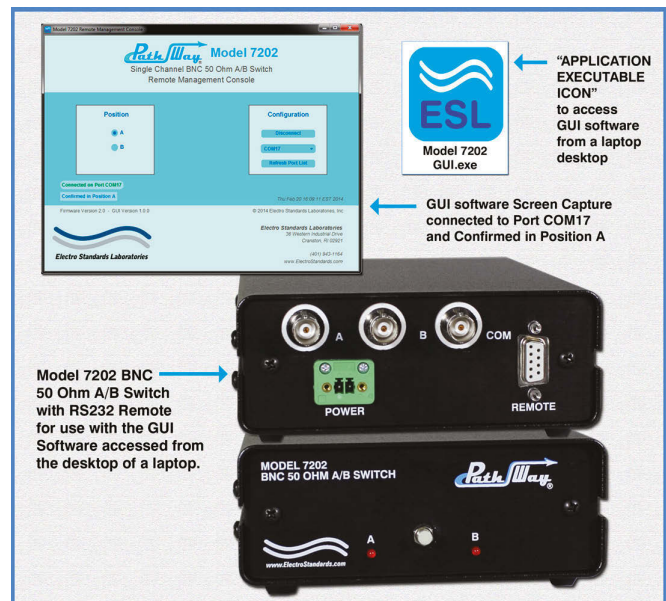
The GUI provides a point-and-click interface for interacting with the Model 7202. After installing, launch the GUI by opening the executable, either directly or through any shortcuts that may have been made in the start menu, on the desktop, or in any other location.

FEATURES:

- Connect to the Model 7202 using computer's COM ports.
- Command the unit to switch via point-and-click operation.
- Position status will be kept up to date when connected, notifying the GUI when the front panel pushbutton on the unit is operated.
- Supports Windows 7 / Windows 8; 32-bit (x86), 64-bit (x64).
- Also applicable to the Model 7302, Cat. No. 307302 75 Ohm BNC A/B Switch.
- Also applicable to the Model 7402, Cat. No. 307402 93 Ohm BNC A/B Switch.

★ Supplied with extensive Manual of Operation:

- **Installation**
- **Operation**
- **Uninstall**
- **Troubleshooting**
- **Customer & Technical Support**
- **Illustrative Figures 1 through 9**



The GUI software alerts the user when the position is switched via the front panel pushbutton of the unit.

