

QuickSwitch® 6323 Single Channel SC/APC Duplex A/B Switch with Telnet and GUI

- **Three Switch Modes: Manual / GUI Remote Ethernet / Auto Fallback - Signal Power Threshold**

INTRODUCTION

The **QuickSwitch® 6323** Single Channel SC/APC Duplex A/B Switch with Telnet and GUI allows the user the capability of sharing a single port SC/APC Duplex interface device, connected to the "COMMON" port, among two other devices, connected to the "A" and "B" ports. The **QuickSwitch® 6323** is enclosed in a 1U, full rack size, all metal black chassis designed to fit in a standard 19" rack.

Auto Switch Mode operation permits the switch to manage the channel connection. When signal power drops on Channel A, the unit automatically switches to the backup/Channel B position. Remote access can be accomplished using an Ethernet 10/100Base-T connection with either a Telnet or GUI Session. Proper authentication is required for remote access via the 10/100Base-T connection. Users can then monitor status, lockout front panel pushbutton control, and control switch position.

FEATURES:

- Access any one of two SC/APC Duplex fiber optic networks from one computer.
- The switch ports are transparent to all data.
- All fiber signals are switched via break-before-make MEMS-based mirror/prism switch technology and supports Gigabit data rates.
- All fiber ports are SC/APC Duplex, Single Mode, 9/125 micron and support a wavelength of 1260 -1620 nm.
- Front-panel pushbutton control.
- Automatic Switch/Fallback based on signal power threshold.
- Signal power detection technology monitors for power level.
- Control of switch position from a 10/100 Base-T Ethernet environment.
- Remote Control Telnet Command interface or Graphical User Interface that allows the user to select switch mode, control switch position, lockout front-panel operations and obtain switch position.
- Front-panel LED's display switch position and power status.
- **IP addressable.**
- Remote control of the switch is password protected, where the password protection can be disabled.
- Switch maintains last set position on power loss and continues to pass data.
- When power is restored, unit maintains its position and continues to pass data.
- Optical data throughput scalability.



SPECIFICATIONS:

FIBER SIZE & WAVELENGTH: 9/125 micron, 1260-1620 nm.

PORT CONNECTORS: (3) SC/APC Duplex connectors labeled A, B, and COMMON.

CONTROL: (1) Pushbutton allows selection of switch position.

DISPLAY: (2) Red LED's display switch position and power status.

SUPERVISORY REMOTE PORT: (1) RJ45 (F) connector accepts 10/100 BASE-T LAN Ethernet that uses both TELNET commands and a GUI interface for Remote Control operation.

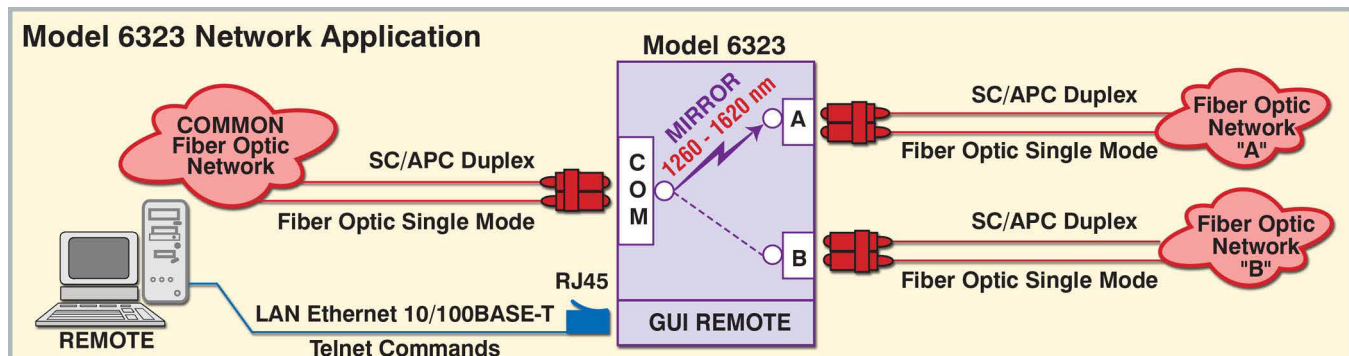
POWER: UL approved 100VAC/240VAC, 50Hz/60Hz wall mount power module supplies 12VDC 500 mA to the unit. Has 2-prong, US, non-polarized plug.

DIMENSIONS: Rackmount, 19.0" W x 1.75" H x 10.0" D. (48.3 x 4.4 x 25.4 cm)

WEIGHT: Approximately 4.1 lbs. (1.9 kg)

WIDE RANGE POWER OPTION AVAILABLE:

(Cat No 517277) **CE, RoHS, and UL** listed table mount power module, 100VAC/240VAC, 50Hz/60Hz for use in place of standard power module that is included with the unit. Has IEC 60320 C14 inlet. **Ideal for international applications.**



UTILIZING THE USER-FRIENDLY REMOTE GRAPHICAL USER INTERFACE SOFTWARE

To connect to the switch from a workstation or computer having access to the LAN that the QuickSwitch® 6323 LAN port is connected to, simply launch a standard web browser and type in the appropriate IP address. The Java Applet will be automatically uploaded from the switch upon connection. The environment requirement for the GUI is Java 1.7 and above.

Finding the IP Address of the Switch

After installing DeviceInstaller and opening it, the software will automatically search for devices on the network. Once found, the devices will be listed in the right pane (see Figure 2). Match the MAC address on the rear of the unit to the MAC address ("Hardware Address") shown in DeviceInstaller to correctly identify the desired unit and find the associated IP address.



Figure 1: GUI in a Standard Web Browser

SOFTWARE FEATURES:

- Access User Interface via standard web browser.
- **Easy to use, simple point and click operation.**
- Remotely access to control or monitor the QuickSwitch® 6323.
- Remote control of the switch is password protected, where password protection can be disabled.
- Users can change the switch's IP address.
- LAN access gives users across the LAN or over the Internet access to control if user network is configured accordingly.

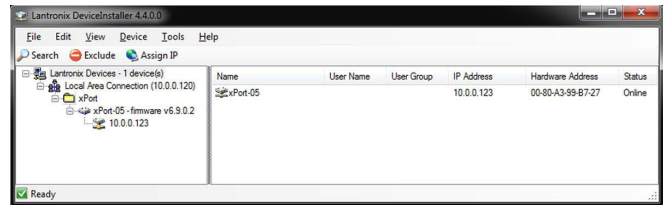


Figure 2: Finding the IP address in DeviceInstaller

LOGGING into the Remote Control GUI

Once logged in, the user can perform one of several actions:

- Select one of three switch modes.
- Change the switch position
- Lockout control of the switch's front panel
- Obtain switch status
- Change the login password
- Re-configure the switch's IP address

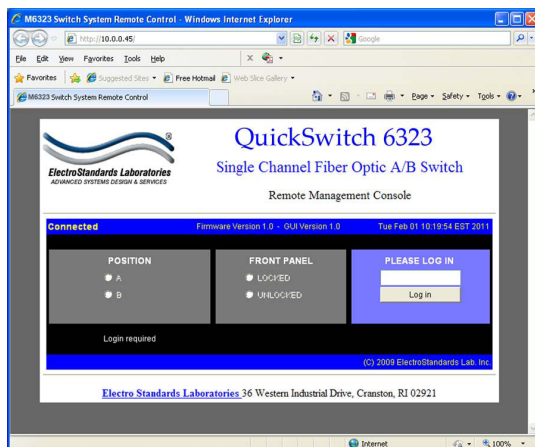
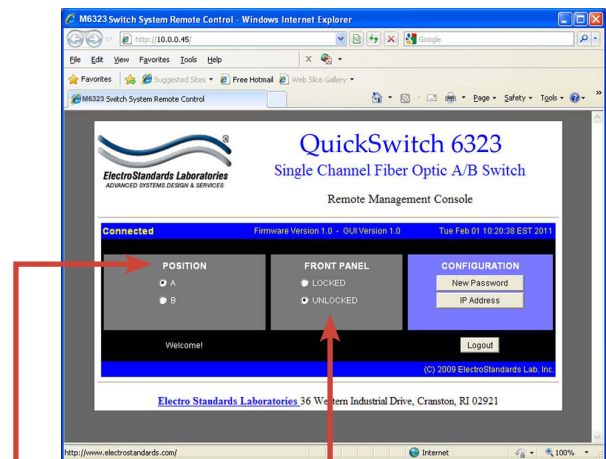


Figure 3: Logging into the GUI

CHANGING POSITION AND LOCK STATUS

To change the switch position, click on the radio button "A" or "B" as desired. Locking and unlocking the front panel pushbutton can be done by clicking on the "Locked" or "Unlocked" radio buttons. See Figure 4.



Switch position by selecting "A" or "B".

Lock and unlock the front panel operation

Figure 4: Change the position and lockout from the GUI